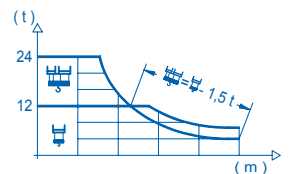
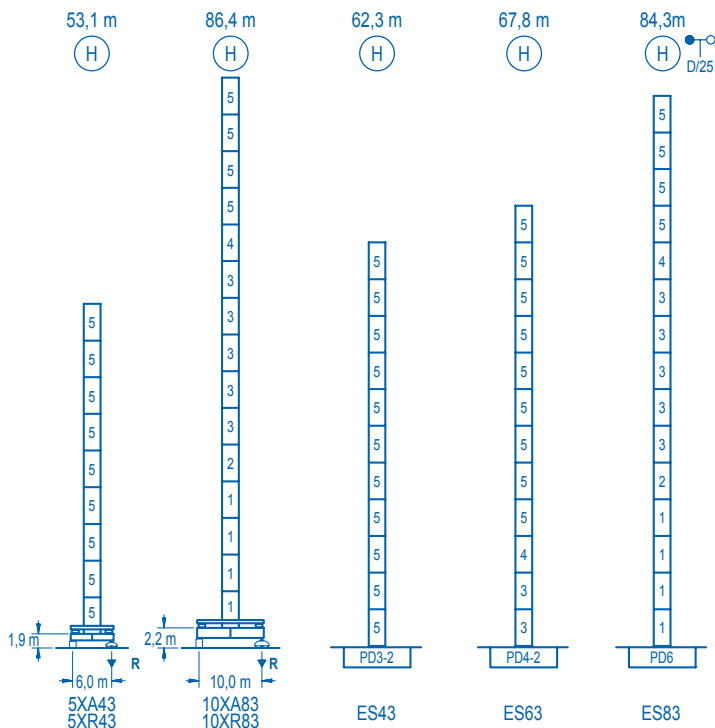


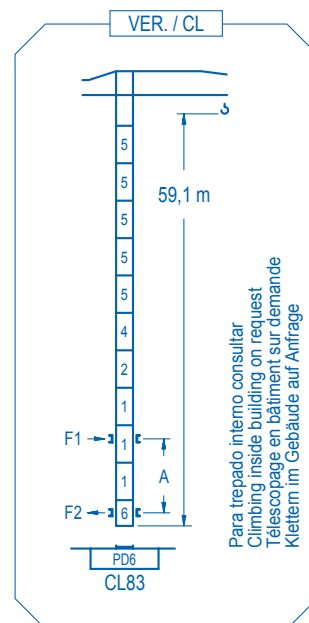
CE EN 14439
(C/25)

R (m)																																
	15,3	18,0	20,0	26,5	28,5	35,0	40,0	45,0	50,0	55,0	60,0	64,0	70,0	74,0	80,0	m	15,2	18,0	20,0	26,4	28,5	35,0	40,0	45,0	50,0	55,0	60,0	64,0	70,0	74,0	m	
80	24000	19610	17200	12000	12000	9410	8020	6950	6100	5400	4830	4430	3920	3630	3250	kg	24000	19560	17160	12000	12000	9450	8060	6980	6130	5430	4850	4450	3940	3650		kg
74		18,7	20,0	25,0	32,6	35,8	40,0	45,0	50,0	55,0	60,0	64,0	70,0		m		18,5	20,0	25,0	32,3	35,6	40,0	45,0	50,0	55,0	60,0	64,0		m			
70		24000	22140	16850	12000	12000	10550	9190	8110	7230	6500	5990	5350		kg		24000	21870	16640	12000	12000	10480	9130	8050	7180	6450	5950		kg			
64			22,3	25,0	30,0	35,0	39,1	43,5	50,0	55,0	60,0		m			24000	20940	16770	13830	12000	12000	10220	9140	8250		kg						
60			22,2	25,0	30,0	35,0	38,9	43,6	50,0		m			24000	20800	16660	13730	12000	12000	10250		kg										
50			22,1	25,0	30,0	38,8	40,0		m			24000	20740	16610	12000	12000		kg														
40																																





nº	Ref.	b	h
1	D36	2,5	5,5
2	TD36A	2,5	5,5
3	D34	2,5	5,5
4	TD34	2,5	5,5
5	D33	2,5	5,5
6	CLD36	2,5	3,8



R. máx.	En servicio	5XR43.....133,7 t 10XR83.....118,2 t
	In operation	
	En service	
	In Betrieb	

R. máx.	Fuera de servicio	5XR43.....93,0 t 10XR83.....186,1 t
	Out of service	
	Hors service	
	Ausser Betrieb	

Para otras zonas de viento o alturas superiores consultar
For other wind zones or additional hook heights on request
Pour d'autres zones de vent ou des hauteurs supplémentaires sur demande
Für andere Windzonen oder weiteren Hakenhöhen auf Anfrage

	5XA43	10XA83
A max	40,4	73,7
B max	-	33,0
C max	51,2	45,7
H max	91,6	119,1

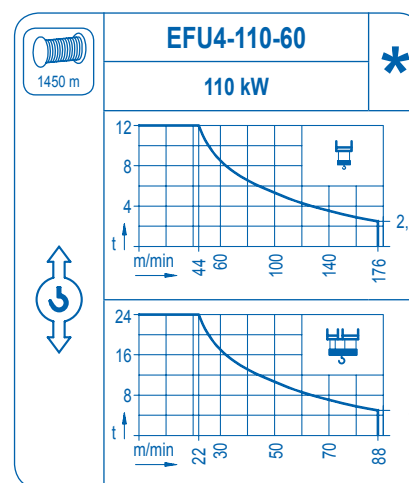
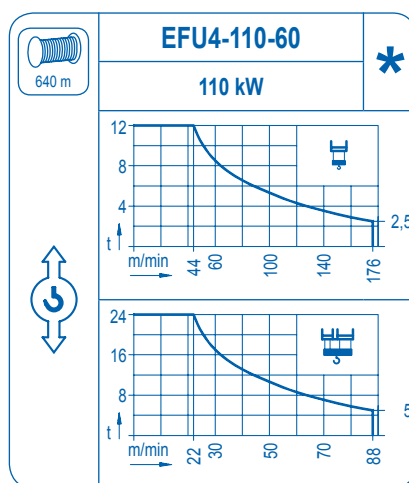
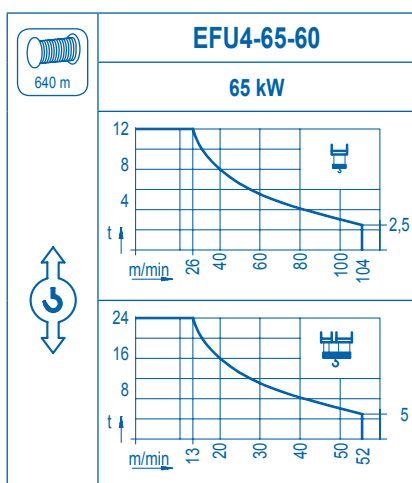
	ES43	ES63	ES83
A max	49,6	55,1	71,6
B max	-	33,0	-
C max	45,7	45,7	45,7
H max	95,3	128,3	100,8

	CFU-7.5
	7,5 kW
0 ⇄ 94 m/min	

	GR-12
	4 x 120 Nm
0 ⇄ 0,7 rpm	

	TRA-7.5	TRA-10
	2 x 75 Nm	2 x 100 Nm
0 ⇄ 20 m/min		
	5XR43	10XR83

	TRA-7.5VC	TRA-10VC
	2 x 75 Nm	2 x 100 Nm
0 ⇄ 20 m/min		
	5XR43	10XR83



Tensión de alimentación	400 V
Operating voltage	3 ph
Tension de service	50 Hz
Betriebsspannung	

Opcional	*
Optional	
En option	
Kaufoption	



Tel.: (34) 948 335 020
Fax: (34) 948 330 810
e-mail: info@comansa.com
www.comansa.com

Polígono Urbizkain
E-31620 HUARTE-PAMPLONA.- SPAIN