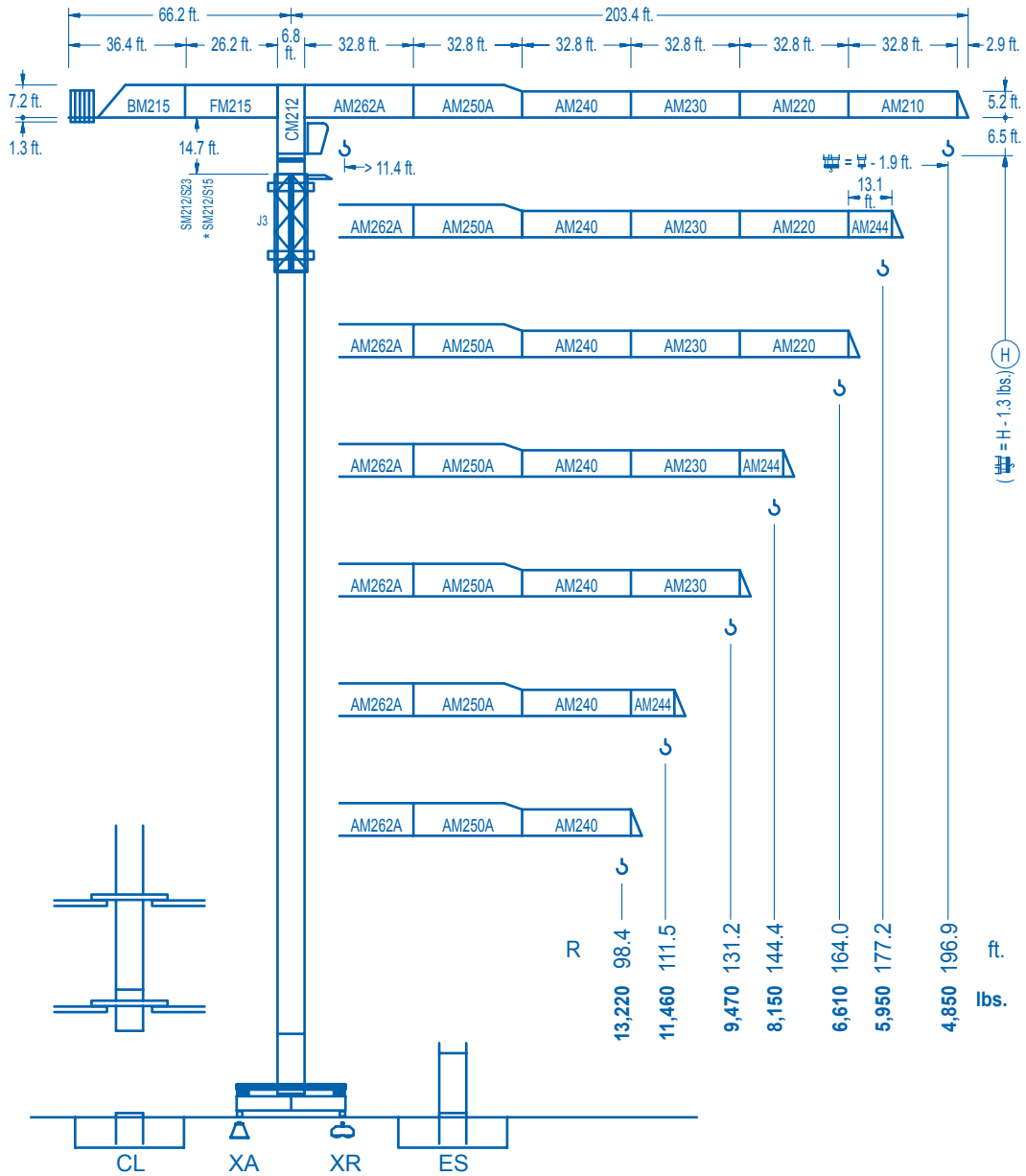


**LINDEN 2100**

**21 LC 170**

**26,450 lbs.**



**CE EN 14439 (C/25)**

R (ft.)	⌘			⌘								
<b>196.9</b>	46.6	65.6	82.0	84.6	98.4	111.5	131.2	144.4	164.0	177.2	196.9	ft.
	26,450	17,500	13,220	13,220	11,120	9,620	7,950	7,100	6,080	5,530	4,850	lbs.
<b>177.2</b>	48.6	65.6	85.6	89.6	98.4	111.5	131.2	144.4	164.0	177.2	ft.	
	26,450	18,450	13,220	13,220	11,880	10,290	8,520	7,610	6,530	5,950	lbs.	
<b>164.0</b>	48.9	65.6	86.0	90.6	98.4	111.5	131.2	144.4	164.0	ft.		
	26,450	18,500	13,220	13,220	12,010	10,400	8,610	7,700	6,610	lbs.		
<b>144.4</b>	50.5	65.6	82.0	88.9	94.8	111.5	131.2	144.4	ft.			
	26,450	19,290	14,660	13,220	13,220	11,000	9,110	8,150	lbs.			
<b>131.2</b>	51.5	65.6	82.0	91.2	98.1	111.5	131.2	ft.				
	26,450	19,870	15,120	13,220	13,220	11,410	9,470	lbs.				
<b>111.5</b>	51.2	65.6	82.0	90.6	98.4	111.5	ft.					
	26,450	19,680	14,980	13,220	13,220	11,460	lbs.					
<b>98.4</b>	50.9	65.6	82.0	89.9	98.4	ft.						
	26,450	19,530	14,840	13,220	13,220	lbs.						

