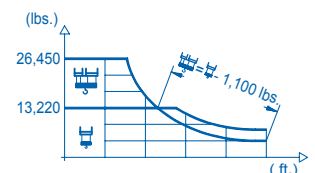
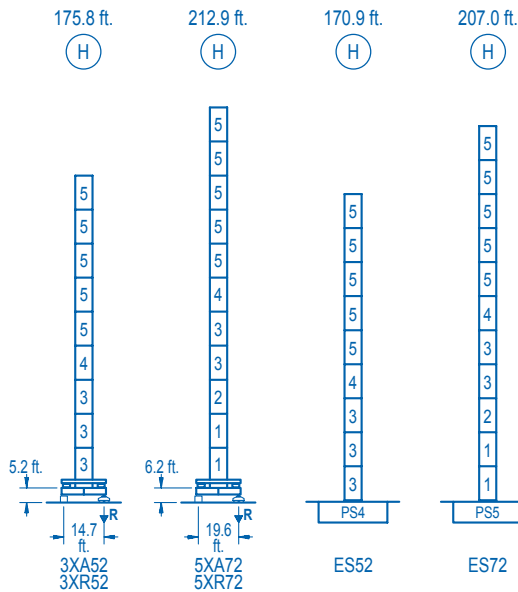
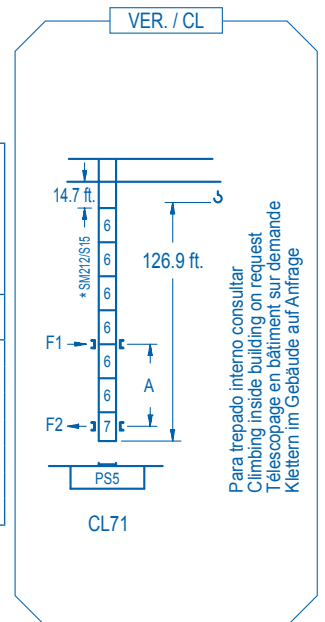


R (ft.)	⌘				⌘								
210.0	54.1	65.6	82.0	95.8	99.4	111.5	131.2	144.4	164.0	177.2	196.9	210.0	ft.
	26,450	21,070	16,070	13,220	13,220	11,610	9,640	8,640	7,420	6,770	5,960	5,510	lbs.
196.9	55.1	65.6	82.0	97.8	102.4	111.5	131.2	144.4	164.0	177.2	196.9	ft.	
	26,450	21,570	16,460	13,220	13,220	11,990	9,960	8,910	7,680	7,010	6,170	lbs.	
177.2	55.1	65.6	82.0	97.4	102.7	111.5	131.2	144.4	164.0	177.2	ft.		
	26,450	21,490	16,400	13,220	13,220	12,070	10,010	8,970	7,720	7,050	lbs.		
164.0	60.7	65.6	82.0	98.4	107.6	114.8	131.2	144.4	164.0	ft.			
	26,450	24,110	18,480	14,790	13,220	13,220	11,380	10,210	8,810	lbs.			
144.4	63.0	65.6	82.0	98.4	111.9	120.7	131.2	144.4	ft.				
	26,450	25,190	19,330	15,490	13,220	13,220	12,030	10,800	lbs.				
131.2	63.0	65.6	82.0	98.4	111.9	121.4	131.2	ft.					
	26,450	25,220	19,350	15,500	13,220	13,220	12,120	lbs.					
111.5	62.3	65.6	82.0	88.6	98.4	111.5	ft.						
	26,450	24,940	19,130	17,430	15,330	13,440	lbs.						
98.4	62.0	65.6	82.0	88.6	98.4	ft.							
	26,450	24,790	19,010	17,320	15,650	lbs.							





nº	Ref.	h	h
1	S25	6.5	18.0
2	TS25	6.5	18.0
3	S24	6.5	18.0
4	TS24	6.5	18.0
5	S23	6.5	18.0
6	S15	5.2	18.0
7	CLS15	5.2	10.1



R. máx.	En servicio In operation En service In Betrieb	3XR52...214,070 lbs. 5XR72...200,840 lbs.	R. máx.	Fuera de servicio Out of service Hors service Ausser Betrieb	3XR52...216,710 lbs. 5XR72...294,980 lbs.

Para otras zonas de viento o alturas superiores consultar
For other wind zones or additional hook heights on request
Pour d'autres zones de vent ou des hauteurs supplémentaires sur demande
Für andere Windzonen oder weiteren Hakenhöhen auf Anfrage

	3XA52	5XA72	ES52	ES72
A max	131.5	168.6	126.6	162.7
B max	-	16.5	-	16.5
C max	98.4	98.4	98.4	98.4
H max	229.9	284.1	267.0	321.1
	225.0	279.1	261.1	315.2

CFU-7.5
10 hp.

0 ⇄ 308 ft./min

GR-12
2 x 88 ft.lbs.

0 ⇄ 0.8 rpm

TRA-7.5
2 x 55 ft.lbs.

0 ⇄ 78 ft./min

TRA-7.5VC
2 x 55 ft.lbs. *

0 ⇄ 78 ft./min

5XR72

EFU2-37-30
50 hp.

EFU4-45-30
60 hp. *

EFU4-65-30
87 hp. *

Tensión de alimentación Operating voltage Tension de service Betriebsspannung	480 V 3 ph 60 Hz
--	---

Opcional Optional En option Kaufoption	*
---	----------