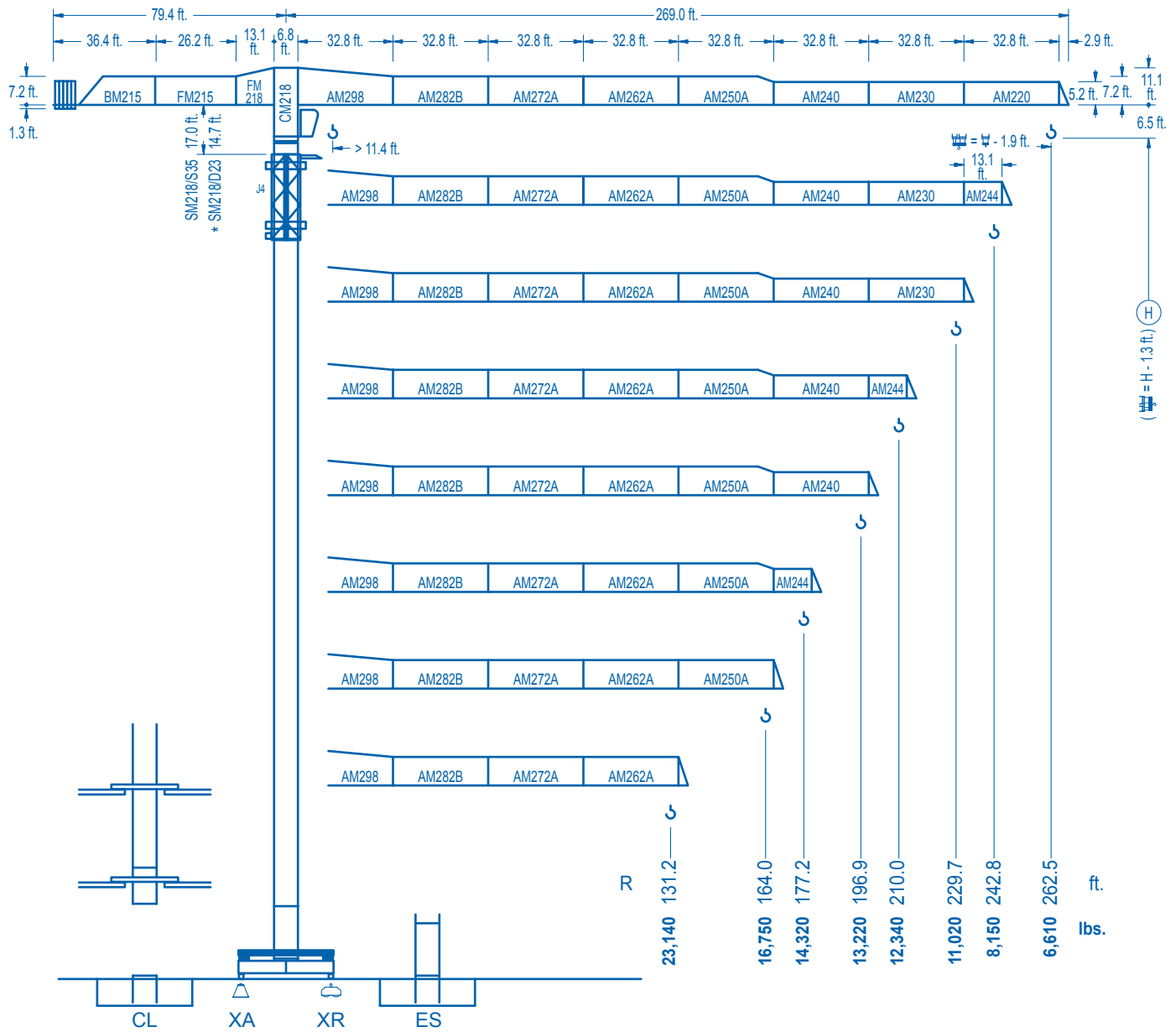


## LINDEN 2100

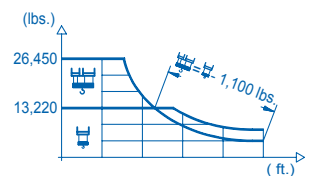
## 21 LC 400

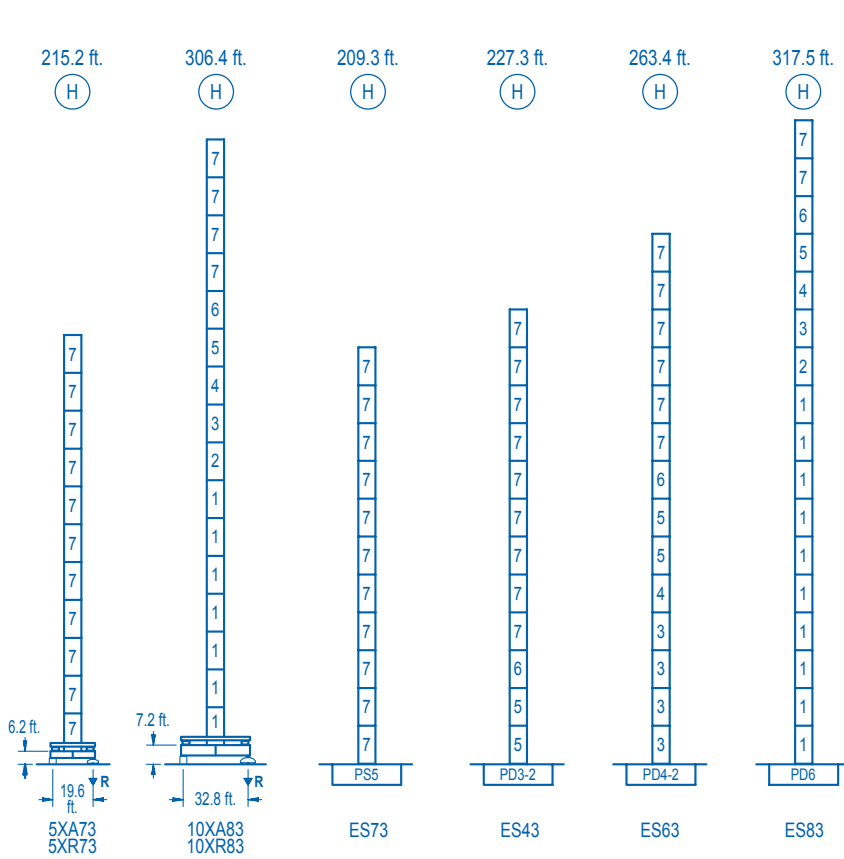
## 26,450 lbs.



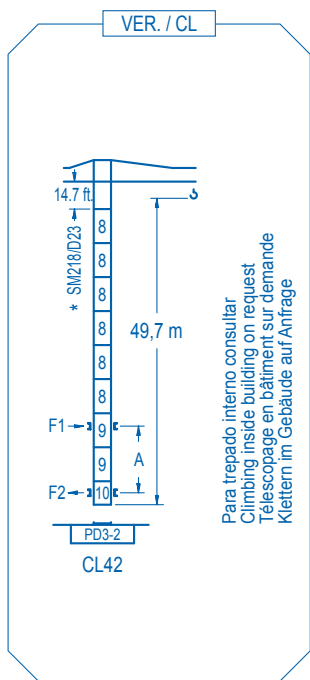
**CE** EN 14439  
(C/25)

R (ft.)	⊞						⊞								
262.5	77.4	82.0	98.4	111.5	121.4	137.8	144.0	164.0	177.2	196.9	210.0	229.7	242.8	262.5	ft.
	<b>26,450</b>	<b>24,720</b>	<b>19,940</b>	<b>17,160</b>	<b>15,480</b>	<b>13,220</b>	<b>13,220</b>	<b>11,430</b>	<b>10,470</b>	<b>9,280</b>	<b>8,600</b>	<b>7,740</b>	<b>7,260</b>	<b>6,610</b>	lbs.
242.8		84.3	98.4	111.5	121.4	131.2	150.3	158.8	177.2	196.9	210.0	229.7	242.8	ft.	
		<b>26,450</b>	<b>22,040</b>	<b>19,000</b>	<b>17,170</b>	<b>15,610</b>	<b>13,220</b>	<b>13,220</b>	<b>11,700</b>	<b>10,380</b>	<b>9,640</b>	<b>8,690</b>	<b>8,150</b>	lbs.	
229.7			101.7	111.5	121.4	131.2	144.4	164.0	181.8	195.2	210.0	229.7	ft.		
			<b>26,450</b>	<b>23,730</b>	<b>21,500</b>	<b>19,620</b>	<b>17,510</b>	<b>15,010</b>	<b>13,220</b>	<b>13,220</b>	<b>12,190</b>	<b>11,020</b>	lbs.		
210.0				102.0	111.5	121.4	131.2	144.4	164.0	182.7	197.5	210.0	ft.		
				<b>26,450</b>	<b>23,880</b>	<b>21,640</b>	<b>19,750</b>	<b>17,630</b>	<b>15,110</b>	<b>13,220</b>	<b>13,220</b>	<b>12,340</b>	lbs.		
196.9					105.6	111.5	121.4	131.2	144.4	164.0	189.0	196.9	ft.		
					<b>26,450</b>	<b>24,830</b>	<b>22,510</b>	<b>20,560</b>	<b>18,380</b>	<b>15,770</b>	<b>13,220</b>	<b>13,220</b>	lbs.		
177.2						104.0	111.5	121.4	131.2	144.4	164.0	177.2	ft.		
						<b>26,450</b>	<b>24,430</b>	<b>22,150</b>	<b>20,220</b>	<b>18,070</b>	<b>15,500</b>	<b>14,320</b>	lbs.		
164.0							109.6	111.5	121.4	131.2	144.4	164.0	ft.		
							<b>26,450</b>	<b>25,900</b>	<b>23,500</b>	<b>21,470</b>	<b>19,200</b>	<b>16,750</b>	lbs.		
131.2								114.8	121.4	131.2	ft.				
								<b>26,450</b>	<b>24,840</b>	<b>23,140</b>	lbs.				





nº	Ref.	h (ft.)	h (m)
1	D36	8.2	18.0
2	TD36A	8.2	18.0
3	D34	8.2	18.0
4	TD34	8.2	18.0
5	D33	8.2	18.0
6	TD33A	8.2	18.0
7	S35	8.2	18.0
8	D23	6.6	18.0
9	D23A	6.6	18.0
10	CLD23A	6.6	10.2



<b>R. máx.</b>	En servicio In operation En service In Betrieb	5XR73.....279,540 lbs. 10XR83.....274,250 lbs.	<b>R. máx.</b>	Fuera de servicio Out of service Hors service Ausser Betrieb	5XR73.....604,620 lbs. 10XR83.....466,050 lbs.
----------------	---	---	----------------	---	---

Para otras zonas de viento o alturas superiores consultar  
For other wind zones or additional hook heights on request  
Pour d'autres zones de vent ou des hauteurs supplémentaires sur demande  
Für andere Windzonen oder weiteren Hakenhöhen auf Anfrage

	5XA73	10XA83
A max	168.6	259.8
B max	- 108.3	- 108.3
C max	154.9 154.9	154.9 154.9
H max	98.6 131.6	126.4 159.4

	ES73	ES43	ES63	ES83
A max	162.7	180.8	216.9	271.0
B max	108.3	108.3	108.3	108.3
C max	154.9 154.9	154.9 154.9	154.9 154.9	154.9 154.9
H max	317.6 425.9	335.6 443.9	371.7 480.0	425.9 534.1

**CFU-7.5**  
10 hp.  
0 ⇄ 308 ft./min

**GR-12**  
4 x 88 ft.lbs.  
0 ⇄ 0.7 rpm

**TRA-7.5** **TRA-10**  
2 x 55 ft.lbs. 2 x 74 ft.lbs.  
0 ⇄ 78 ft./min  
5XR73 10XR83

**TRA-7.5VC** **TRA-10VC**  
2 x 55 ft.lbs 2 x 74 ft.lbs.  
0 ⇄ 78 ft./min  
5XR73 10XR83

**EFU2-37-30**  
50 hp.  
1,260 ft.  
Graphs showing torque vs speed for 111, 131, 197, 262 ft/min and 56, 88, 98, 131 ft/min.

**EFU4-45-30**  
60 hp.  
1,790 ft.  
Graphs showing torque vs speed for 125, 262, 394, 525 ft/min and 82, 131, 197, 262 ft/min.

**EFU4-65-30**  
87 hp.  
2,590 ft.  
Graphs showing torque vs speed for 174, 262, 394, 525, 656, 735 ft/min and 88, 131, 197, 262, 328, 367 ft/min.

Tensión de alimentación Operating voltage Tension de service Betriebsspannung	<b>480 V</b> <b>3 ph</b> <b>60 Hz</b>
--	---

Opcional Optional En option Kaufoption	<b>*</b>
---	----------