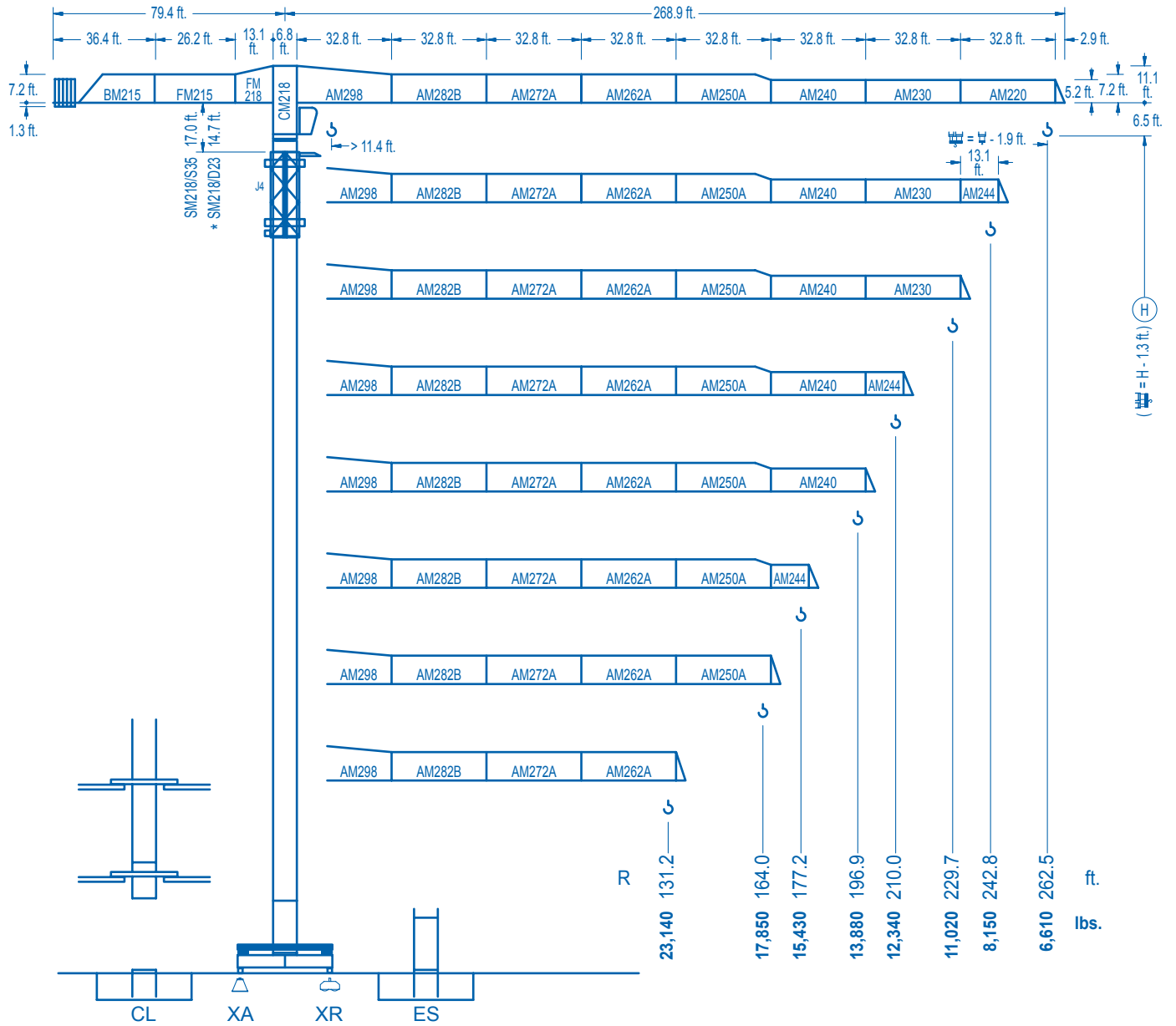


**LINDEN 2100**

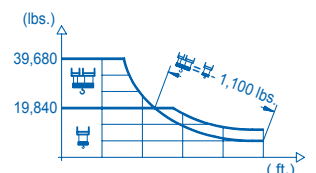
**21 LC 400**

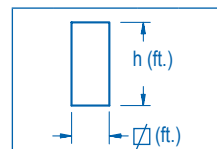
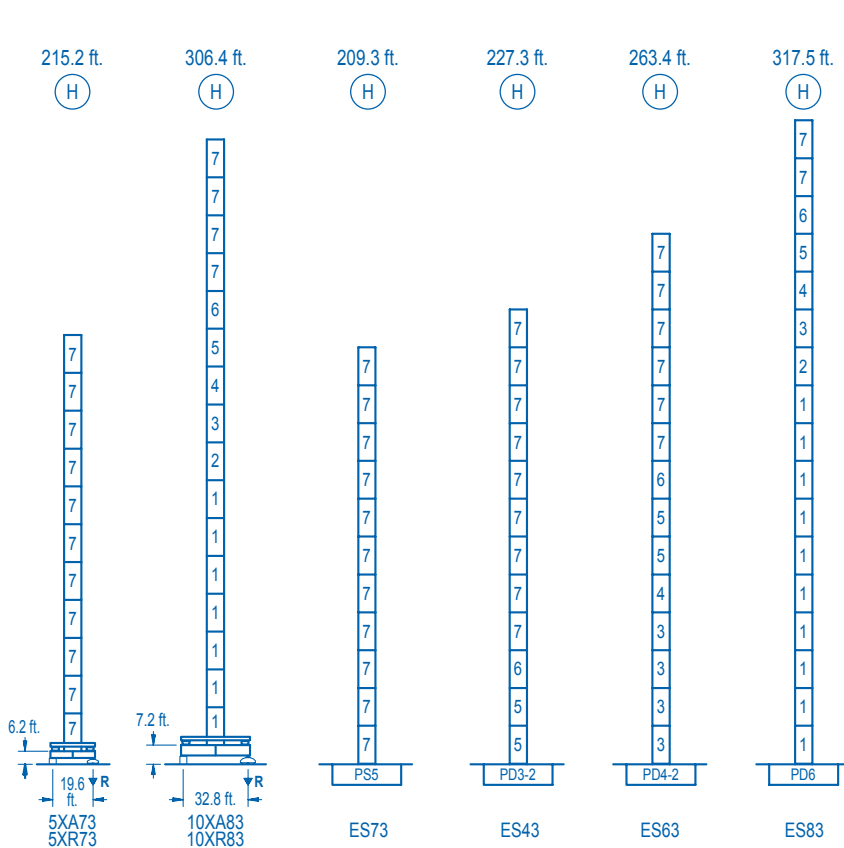
**39,680 lbs.**



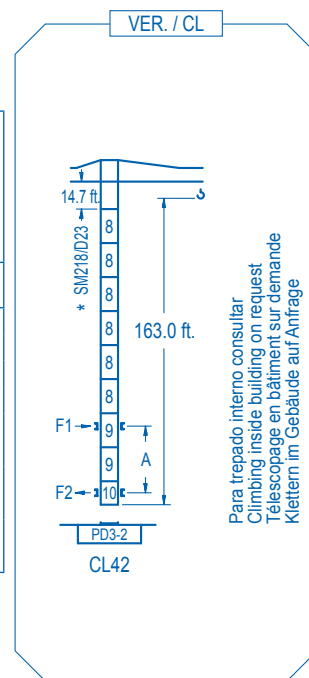
**CE EN 14439 (C/25)**

R (ft.)	⌘				⌘											
<b>262.5</b>	54.5	65.6	82.0	98.8	100.1	111.5	131.2	144.4	164.0	177.2	196.9	210.0	229.7	242.8	262.5	ft.
	39,680	32,020	24,720	19,840	19,840	17,580	14,680	13,190	11,430	10,470	9,280	8,600	7,740	7,260	6,610	lbs.
<b>242.8</b>	59.1	65.6	82.0	107.6	110.2	111.5	131.2	144.4	164.0	177.2	196.9	210.0	229.7	242.8		ft.
	39,680	35,220	27,250	19,840	19,840	19,560	16,350	14,710	12,760	11,700	10,380	9,640	8,690	8,150		lbs.
<b>229.7</b>		71.2	82.0	98.4	111.5	129.9	135.2	144.4	164.0	177.2	196.9	210.0	229.7			ft.
		39,680	33,760	27,420	23,730	19,840	19,840	18,440	16,030	14,720	13,100	12,190	11,020			lbs.
<b>210.0</b>		71.5	82.0	98.4	111.5	130.9	136.5	144.4	164.0	177.2	196.9	210.0				ft.
		39,680	33,970	27,600	23,880	19,840	19,840	18,670	16,220	14,910	13,270	12,340				lbs.
<b>196.9</b>		73.8	82.0	98.4	111.5	135.5	142.1	144.4	164.0	177.2	196.9					ft.
		39,680	35,250	28,670	24,830	19,840	19,840	19,510	16,970	15,590	13,880					lbs.
<b>177.2</b>		72.8	82.0	98.4	111.5	133.5	140.7	144.4	164.0	177.2						ft.
		39,680	34,700	28,200	24,430	19,840	19,840	19,300	16,780	15,430						lbs.
<b>164.0</b>		76.4	82.0	98.4	111.5	140.4	149.0	164.0								ft.
		39,680	36,710	29,870	25,900	19,840	19,840	17,850								lbs.
<b>131.2</b>		80.4	82.0	98.4	111.5	131.2										ft.
		39,680	38,740	31,550	27,370	23,140										lbs.





nº	Ref.	□	h
1	D36	8.2	18.0
2	TD36A	8.2	18.0
3	D34	8.2	18.0
4	TD34	8.2	18.0
5	D33	8.2	18.0
6	TD33A	8.2	18.0
7	S35	8.2	18.0
8	D23	6.6	18.0
9	D23A	6.6	18.0
10	CLD23A	6.6	10.2



Para trepado interno consultar  
Climbing inside building on request  
Téléscopage en bâtiment sur demande  
Klettern im Gebäude auf Anfrage

<b>R. máx.</b>	En servicio In operation En service In Betrieb	5XR73.....279,540 lbs. 10XR83.....273,810 lbs.	<b>R. máx.</b>	Fuera de servicio Out of service Hors service Ausser Betrieb	5XR73.....252,870 lbs. 10XR83.....466,050 lbs.
----------------	---	---	----------------	---	---

Para otras zonas de viento o alturas superiores consultar  
For other wind zones or additional hook heights on request  
Pour d'autres zones de vent ou des hauteurs supplémentaires sur demande  
Für andere Windzonen oder weiteren Hakenhöhen auf Anfrage

	5XA73	10XA83
A max	168.6	259.8
B max	- 108.3	- 108.3
C max	154.9 154.9	154.9 154.9
H max	98.6 131.6	126.4 159.4

	ES73	ES43	ES63	ES83
A max	162.7	180.8	216.9	271.0
B max	108.3	108.3	108.3	108.3
C max	154.9 154.9	154.9 154.9	154.9 154.9	154.9 154.9
H max	317.6 425.9	335.6 443.9	371.7 480.0	425.9 534.1

**CFU-7.5**  
10 hp.  
0 ⇄ 308 ft./min

**GR-12**  
4 x 88 ft.lbs.  
0 ⇄ 0.7 rpm

**TRA-7.5** **TRA-10**  
2 x 55 ft.lbs. 2 x 74 ft.lbs.  
0 ⇄ 78 ft./min  
5XR73 10XR83

**\* TRA-7.5VC** **TRA-10VC**  
2 x 55 ft.lbs. 2 x 74 ft.lbs.  
0 ⇄ 78 ft./min  
5XR73 10XR83

**EFU4-45-45**  
1,790 ft.  
60 hp.  
19,840 lbs. 13,220 lbs. 6,610 lbs. 3,970 lbs.  
ft./min: 85 131 197 262 328 360  
39,680 lbs. 26,450 lbs. 13,220 lbs. 7,930 lbs.  
ft./min: 43 66 98 131 164 180

**EFU4-65-45**  
2,030 ft.  
87 hp.  
19,840 lbs. 13,220 lbs. 6,610 lbs. 4,410 lbs.  
ft./min: 144 197 328 459  
39,680 lbs. 26,450 lbs. 13,220 lbs. 8,820 lbs.  
ft./min: 72 98 164 230

**EFU4-110-45**  
2,590 ft.  
148 hp.  
19,840 lbs. 13,220 lbs. 6,610 lbs. 4,410 lbs.  
ft./min: 197 394 590 800  
39,680 lbs. 26,450 lbs. 13,220 lbs. 8,820 lbs.  
ft./min: 98 197 295 400

Tensión de alimentación Operating voltage Tension de service Betriebsspannung	<b>480 V</b> <b>3 ph</b> <b>60 Hz</b>
--	---

Opcional Optional En option Kaufoption	<b>*</b>
---	----------