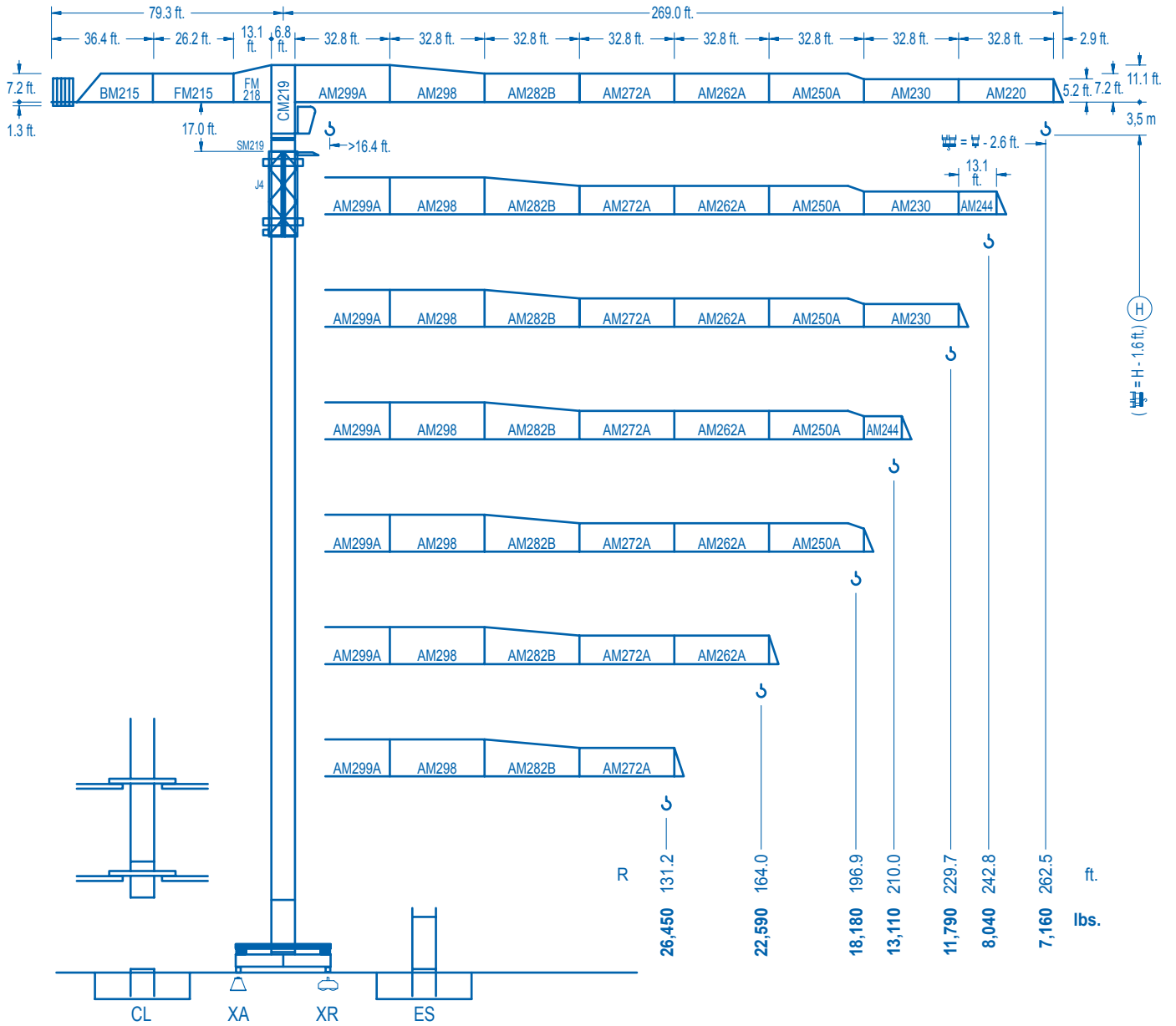


**LINDEN 2100**

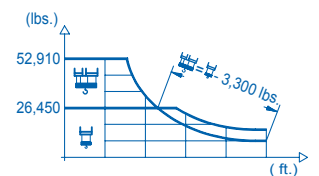
**21 LC 550**

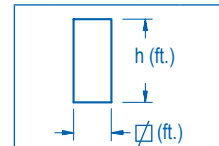
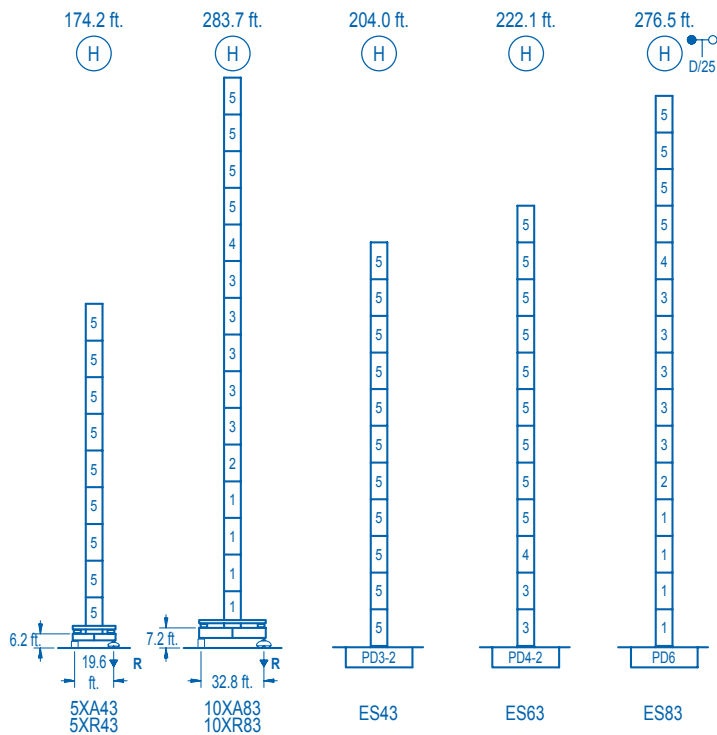
**52,910 lbs.**



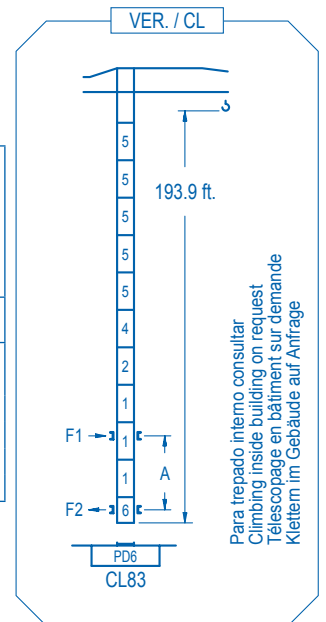
**CE EN 14439 (C/25)**

R (ft.)																
<b>262.5</b>	50.2	59.1	65.6	86.9	93.5	114.8	131.2	147.6	164.0	180.4	196.9	210.0	229.7	242.8	262.5	ft.
	52,910	43,230	37,910	26,450	26,450	20,740	17,680	15,320	13,440	11,900	10,640	9,760	8,640	8,000	7,160	lbs.
<b>242.8</b>	49.9	59.1	65.6	86.6	93.5	114.8	131.2	147.6	164.0	180.4	196.9	210.0	229.7	242.8		ft.
	52,910	43,120	37,830	26,450	26,450	20,830	17,760	15,380	13,510	11,970	10,690	9,810	8,680	8,040		lbs.
<b>229.7</b>		61.4	65.6	82.0	107.0	117.5	131.2	147.6	164.0	180.4	196.9	210.0	229.7			ft.
		52,910	48,800	37,140	26,450	26,450	23,250	20,260	17,870	15,930	14,320	13,200	11,790			lbs.
<b>210.0</b>		60.7	65.6	82.0	106.0	116.8	131.2	147.6	164.0	180.4	196.9	210.0				ft.
		52,910	48,210	36,680	26,450	26,450	23,100	20,120	17,740	15,820	14,210	13,110				lbs.
<b>196.9</b>			73.2	82.0	98.4	114.8	128.3	142.7	164.0	180.4	196.9					ft.
			52,910	46,160	36,970	30,480	26,450	26,450	22,530	20,150	18,180					lbs.
<b>164.0</b>				72.8	82.0	98.4	114.8	127.6	143.0	164.0						ft.
				52,910	45,850	36,720	30,260	26,450	26,450	22,590						lbs.
<b>131.2</b>					72.5	82.0	98.4	127.3	131.2							ft.
					52,910	45,720	36,610	26,450	26,450							lbs.





nr.	Ref.	□	h
1	D36	8.2	18.0
2	TD36A	8.2	18.0
3	D34	8.2	18.0
4	TD34	8.2	18.0
5	D33	8.2	18.0
6	CLD36	8.2	12.4



Para trepado interno consultar  
Climbing inside building on request  
Télescopage en bâtiment sur demande  
Klettern im Gebäude auf Anfrage

<b>R. máx.</b>	En servicio In operation En service In Betrieb	5XR43.....294,760 lbs. 10XR83...260,590 lbs.	<b>R. máx.</b>	Fuera de servicio Out of service Hors service Ausser Betrieb	5XR43.....205,030 lbs. 10XR83.....410,280 lbs.

Para otras zonas de viento o alturas superiores consultar  
For other wind zones or additional hook heights on request  
Pour d'autres zones de vent ou des hauteurs supplémentaires sur demande  
Für andere Windzonen oder weiteren Hakenhöhen auf Anfrage

	5XA43	10XA83
A max	132.5	242.1
B max	- 108.2	- 108.2
C max	167.9/149.9	149.9/149.9
H max	300.5/390.7	392.0/500.3

	ES43	ES63	ES83
A max	162.7	180.7	234.9
B max	- 108.2	- 108.2	- 108.2
C max	149.9/149.9	149.9/149.9	149.9/149.9
H max	312.6/420.9	330.7/438.9	384.8/493.1

**CFU-7.5**  
10 hp.  
0 ⇄ 308 ft./min

**GR-12**  
4 x 88 ft.lbs.  
0 ⇄ 0.8 rpm

**TRA-7.5** **TRA-10**  
2 x 55 ft.lbs. 2 x 74 ft.lbs.  
0 ⇄ 78 ft./min  
5XR43 10XR83

**\* TRA-7.5VC** **TRA-10VC**  
2 x 55 ft.lbs 2 x 74 ft.lbs.  
0 ⇄ 78 ft./min  
5XR43 10XR83

**EFU4-65-60**  
87 hp.  
2,100 ft.  
Graphs showing torque vs speed for 2,100 ft. and 5,510 ft. heights.

**EFU4-110-60**  
148 hp.  
2,100 ft.  
Graphs showing torque vs speed for 2,100 ft. and 5,510 ft. heights.

**EFU4-110-60**  
148 hp.  
4,760 ft.  
Graphs showing torque vs speed for 4,760 ft. and 11,020 ft. heights.

Tensión de alimentación Operating voltage Tension de service Betriebsspannung	480 V 3 ph 60 Hz
--	------------------------

Opcional Optional En option Kaufoption	*
---	---