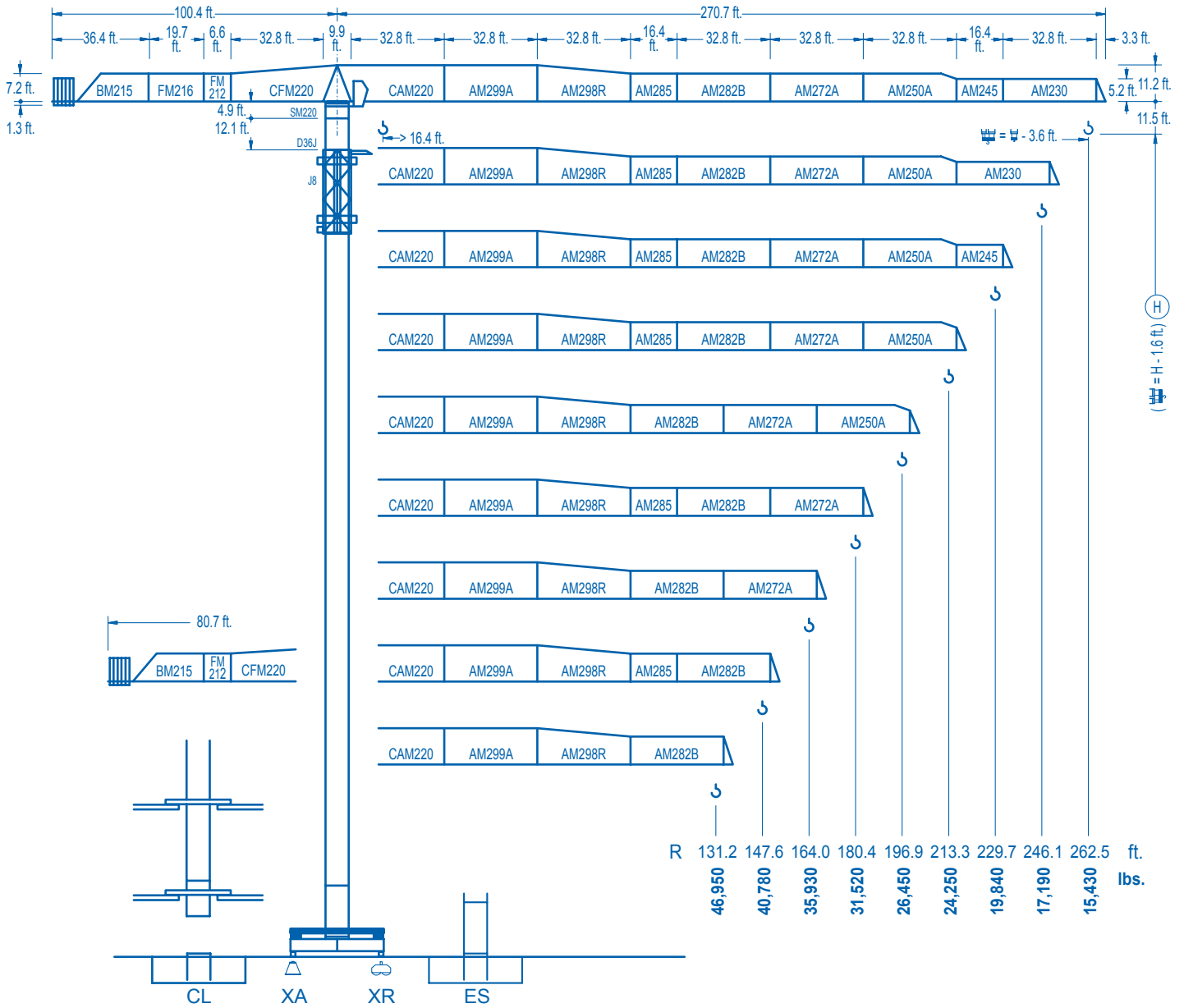


LINDEN 2100

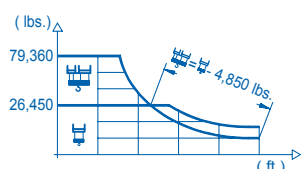
21 LC 750

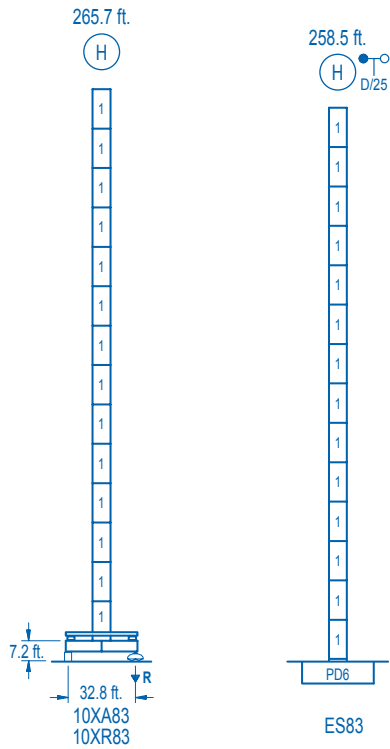
79,360 lbs.



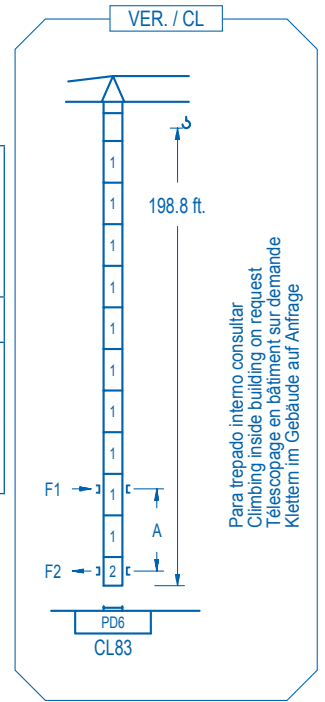
CE EN 14439 (C/25)

R (ft.)																	
262.5	60.0	68.9	75.5	82.0	91.9	105.0	118.1	131.2	143.7	166.3	180.4	196.9	213.3	229.7	246.1	262.5	ft.
	79,360	67,260	60,200	54,360	47,240	39,920	34,300	29,850	26,450	26,450	24,090	21,750	19,790	18,140	16,680	15,430	lbs.
246.1	61.4	68.9	75.5	82.0	91.9	105.0	118.1	131.2	146.7	170.6	180.4	196.9	213.3	229.7	246.1		ft.
	79,360	68,910	61,700	55,730	48,450	40,980	35,250	30,680	26,450	26,450	24,770	22,390	20,390	18,670	17,190		lbs.
229.7	64.0	68.9	75.5	82.0	91.9	105.0	118.1	131.2	147.6	153.5	179.5	196.9	213.3	229.7			ft.
	79,360	72,720	65,160	58,880	51,250	43,400	37,390	32,620	27,880	26,450	26,450	23,760	21,640	19,840			lbs.
213.3		69.9	75.5	82.0	91.9	105.0	118.1	131.2	147.6	164.0	168.3	197.8	213.3				ft.
		79,360	72,500	65,600	57,200	48,580	41,970	36,720	31,520	27,400	26,450	26,450	24,250				lbs.
196.9			76.4	82.0	91.9	105.0	118.1	131.2	147.6	164.0	185.0	196.9					ft.
			79,360	73,120	63,880	54,380	47,090	41,310	35,580	31,040	26,450	26,450					lbs.
180.4				83.3	91.9	105.0	118.1	131.2	147.6	164.0	180.4						ft.
				79,360	70,650	60,270	52,290	45,980	39,720	34,740	31,520						lbs.
164.0				83.7	91.9	105.0	118.1	131.2	147.6	164.0							ft.
				79,360	70,980	60,560	52,550	46,200	39,920	35,930							lbs.
147.6				83.0	91.9	105.0	118.1	131.2	147.6								ft.
				79,360	70,370	60,030	52,070	45,760	40,780								lbs.
131.2				82.3	91.9	105.0	118.1	131.2									ft.
				79,360	69,770	59,500	51,630	46,950									lbs.





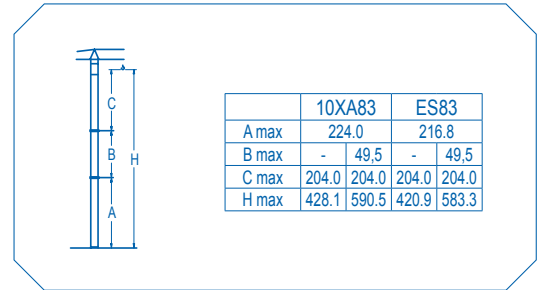
n°	Ref.	h (ft.)
1	D36	8.2
2	CLD36	8.2



Para trepado interno consultar
Climbing inside building on request
Téléscopage en bâtiment sur demande
Klettem im Gebäude auf Anfrage

R. máx.	En servicio In operation En service In Betrieb	10XR83...378,090 lbs.	R. máx.	Fuera de servicio Out of service Hors service Ausser Betrieb	10XR83...344,140 lbs.
----------------	---	-----------------------	----------------	---	-----------------------

Para otras zonas de viento o alturas superiores consultar
For other wind zones or additional hook heights on request
Pour d'autres zones de vent ou des hauteurs supplémentaires sur demande
Für andere Windzonen oder weiteren Hakenhöhen auf Anfrage



CFU-13
17.4 hp.

0 ⇄ 246 ft./min

GR-14
4 x 103 ft.lbs.

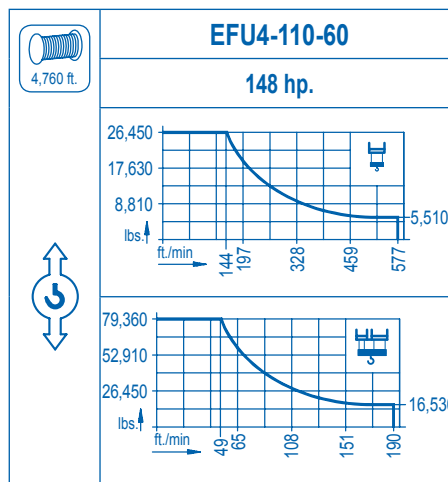
0 ⇄ 0.8 rpm

TRA-10
2 x 74 ft.lbs.

0 ⇄ 78 ft./min

TRA-10VC
2 x 74 ft.lbs. *

0 ⇄ 78 ft./min



Tensión de alimentación Operating voltage Tension de service Betriebsspannung	480 V 3 ph 60 Hz
--	---

Opcional Optional En option Kaufoption	*
---	----------



Tel.: (34) 948 335 020
Fax: (34) 948 330 810
e-mail: info@comansa.com
www.comansa.com

Polígono Urbizkain
E-31620 HUARTE-PAMPLONA.- SPAIN

DS.1002.05	01/10	21 LC 750	79,360 lbs.
------------	-------	------------------	--------------------